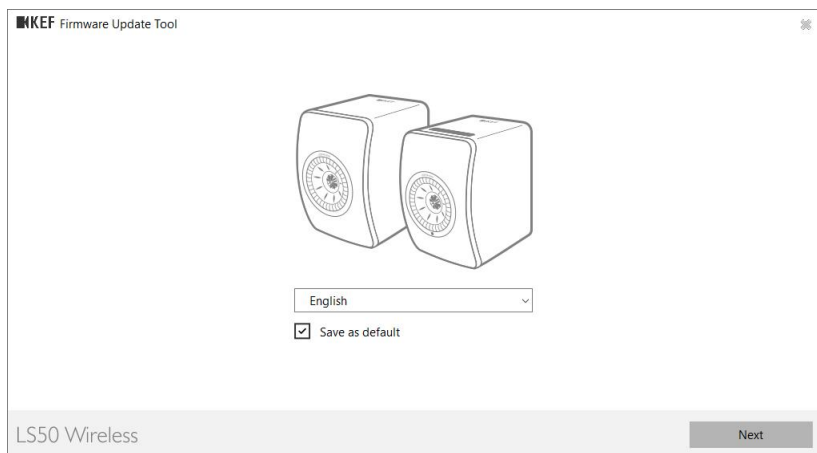


**Requirement for firmware update:**

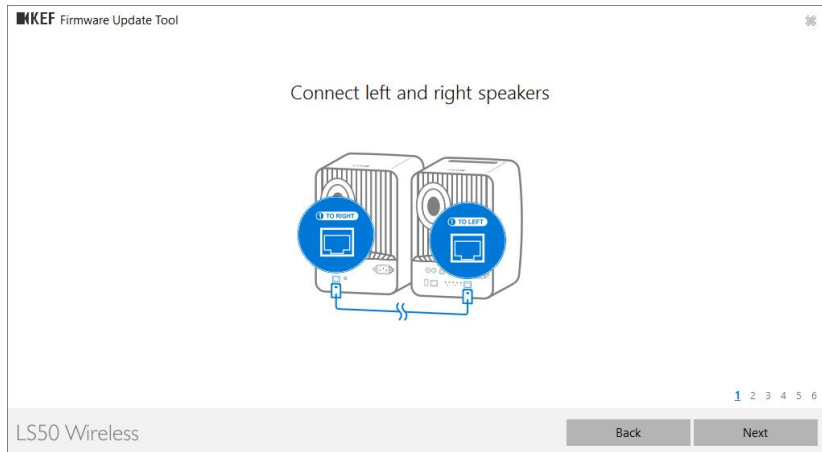
- a) Window 7/8/10 64bit/32bit.
- b) The computer must be connected to the Internet.
- c) Disable firewall/Antivirus if necessary.
- d) The speaker must be in Wi-Fi mode and connected to the internet.
- e) Make sure the update is under a stable network. The process may take up to 10 minutes.

**Procedures:**

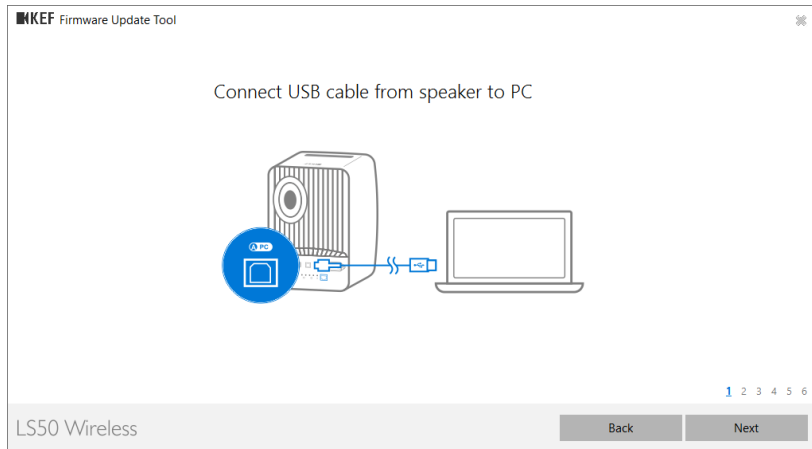
- 1) Download the software update installer to your PC.
- 2) Run by double clicking the installer.



- 3) Connect left and right speakers.



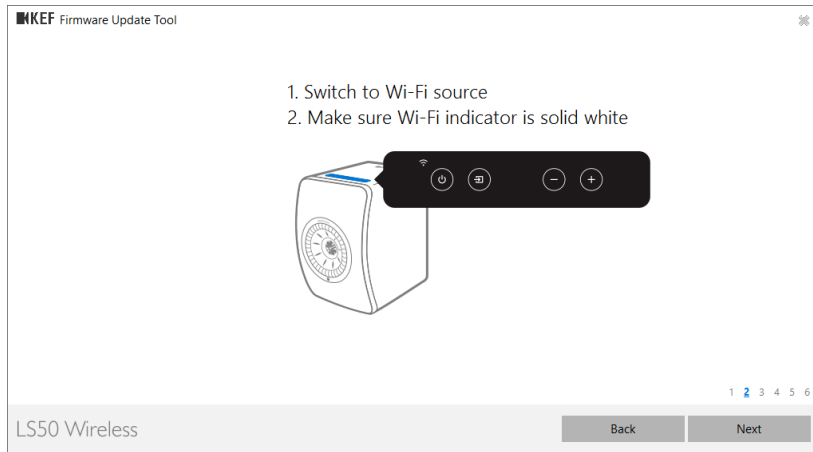
#### 4) Connect USB cable from speaker to PC.



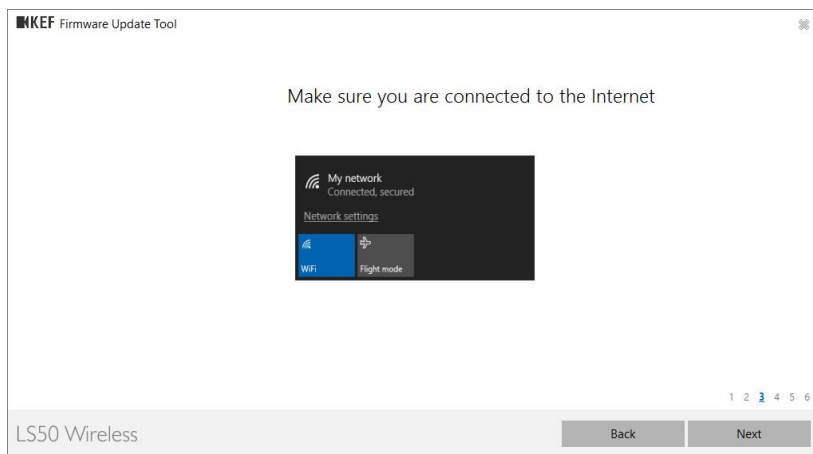
#### 5) Power on speaker.



6) Switch to Wi-Fi source and make sure Wi-Fi indicator is solid white.



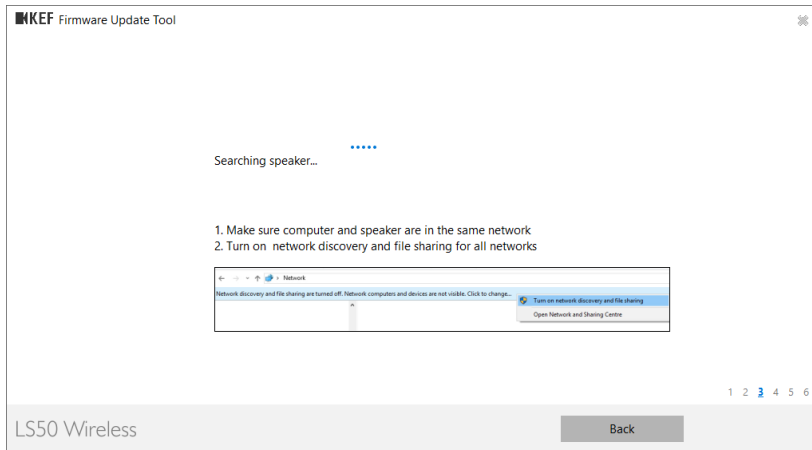
7) Make sure you are connected to the Internet.



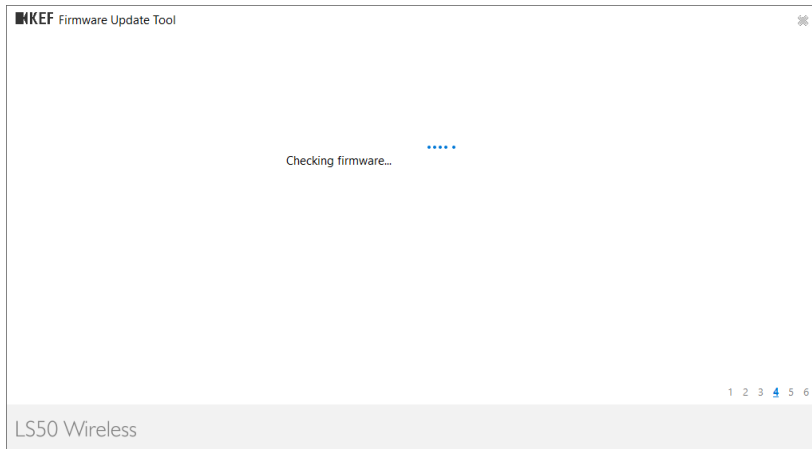
8) The tool will automatically search for LS50 Wireless.

Please make sure,

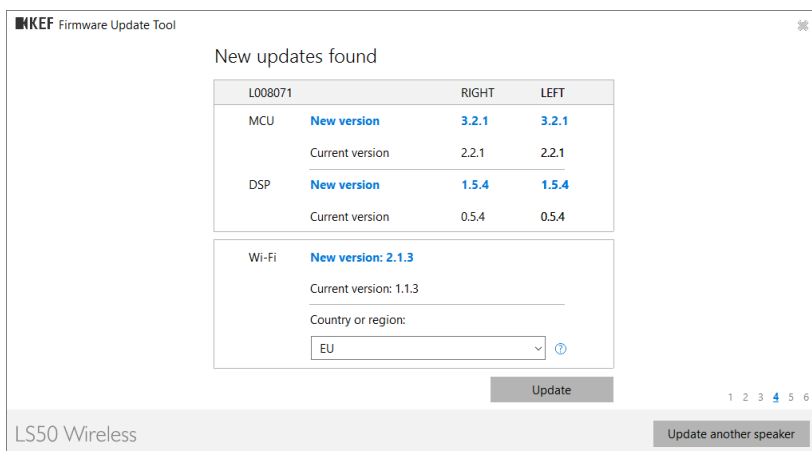
1. Computer and speaker are in the same network.
2. Network discovery and file sharing for all networks is turned on.



9) The update tool will connect to the internet to check for the latest firmware.

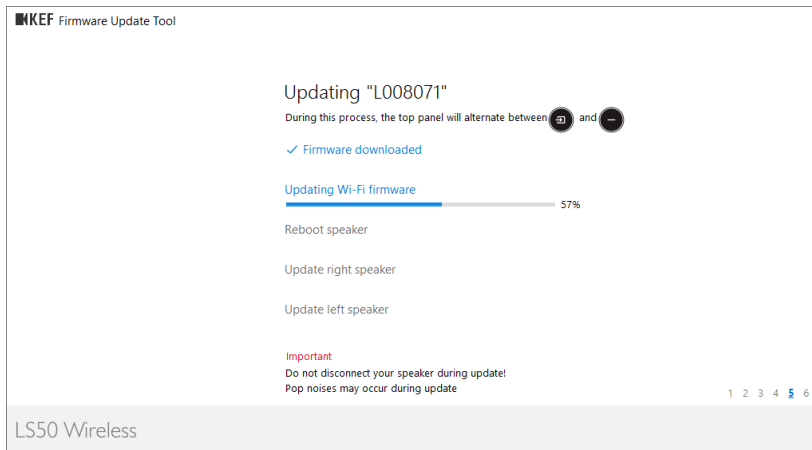


10) Firmware versions are shown. Press the "Update" button.



11) The firmware update starts. Including the following 5 steps:

1. Download firmware.
2. Update Wi-Fi firmware.
3. Reboot speaker.
4. Update right speaker.
5. Update left speaker.



## 12) Update completed.

